

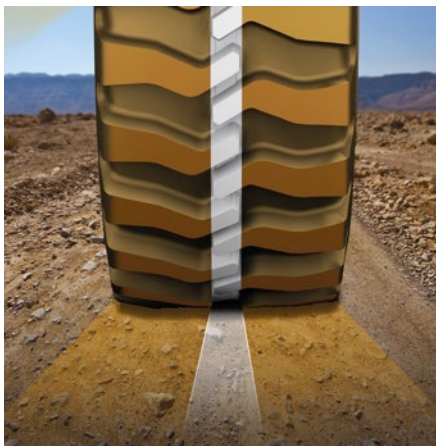
Continental 70E Successor of MPT70E

The 70E tire is designed for tough off-road and construction-site usage on small construction vehicles.

Applications

- › Construction sites
- › Forestry
- › Agriculture
- › All terrain

The 70E can be fitted on small wheel loaders and telehandlers



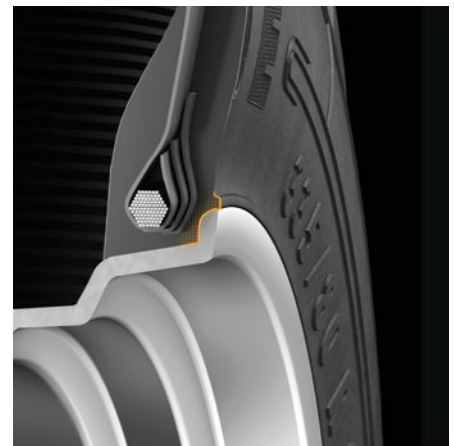
Two-fold pattern design

High work efficiency and low fuel consumption due to dense block configuration with open outer tread design



Symmetric pattern design

High traction capability in forward and backward direction ensures high work efficiency



Tight rim fit

Bead protection of sidewall reduces risk of flat tire

Renaming from MPT70E to 70E and Homologation

Continental has renamed the Continental MPT70E to Continental 70E.

The decision followed a bill being passed by the EU (ECE-R106) in January 2018 which forbid vehicles certified as agricultural machinery (and selected other EM and construction machinery according to EU regulation 167/2013) to be fitted with MPT70E tires.

New Load Index

The Continental 70E has a new load index and is homologized according to ECE-R106. Thus, the tires may be fitted on vehicles that need a type approval according to EU regulation 167/2013.

Exemplary applications



70E

Size	Tire size	LI	SSY	Tread Pattern		New article number	Old article number
18 Inch	325/70R18 MPT	125/138	E/A2	70E		04740440000	04740440000
18 Inch	365/70R18	135/146	B/A2	70E	UNECE R-106 homologation*	05740160000	04740500000
20 Inch	335/80R20 (12.5R20)	136/147	B/A2	70E	UNECE R-106 homologation*	05740170000	05742090000
20 Inch	365/80R20 (14.5R20)	141/153	B/A2	70E	UNECE R-106 homologation*	05740180000	05742120000
20 Inch	405/70R20	143/155	B/A2	70E	UNECE R-106 homologation*	05740190000	05742150000

LI: Load Index
SSY: Speed Symbol

Specifications are subject to change without notice

For further technical information, see data sheets

For details regarding product availability, please contact your local sales representative.

* Due to the R106 homologation, the tires may also be used on vehicles which need tires being type approved according to EU Regulation 167/2013.